

- Long filter life and high filtration efficiency on many applications
- MERV* 10 filtration efficiency rating per ASHRAE 52.2-2007
- Enhanced performance due to a unique combination of fiber sizes and a more uniform fiber distribution indicates excellent performance
- Reduced energy requirements and lower operating costs due to low resistance to airflow
- Flame retardant media available
- Superior to felts, fabrics, cotton cloths, and similar media

APPLICATIONS

- Recommended for a wide variety of applications
- Good choice for dry, coarse particulate
- Economical choice for operations with forced or cyclical filter replacement (independent of pressure drop)

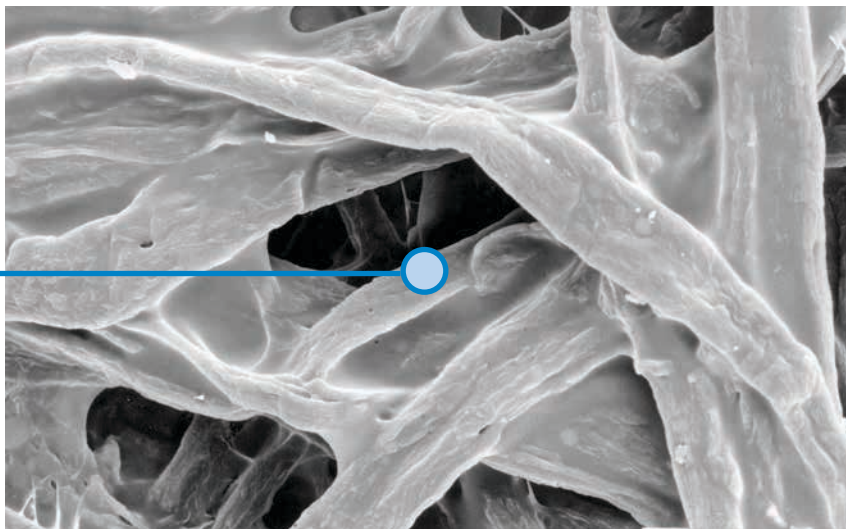


Cellulex Cartridge

SEM† IMAGES

1 micron = 1/25,400 of an inch (1/1000 of a millimeter)

10 micron



Cellulex Media (600x)

† Scanning Electron Microscope

* Refer to Minimum Efficiency Reporting Value on page 2.

SPECIFICATIONS

| MEDIA COMPOSITION | |
|------------------------|--|
| Substrate | Proprietary blend of cellulose fibers Flame retardant version per UL [†] Standard 558, TAPPI Standard T 461 cm-09 |
| CARTRIDGE CONSTRUCTION | |
| Standard Construction | Galvanized metal end caps Galvanized expanded metal liner 72% open area Urethane gasket |
| Options | Optional stainless steel liner and end caps |

| MEDIA EFFICIENCY | |
|--------------------------|--|
| U.S. Efficiency Rating | MERV* 10 per ASHRAE 52.2-2007 |
| MEDIA COMPATIBILITY DATA | |
| Temperature Resistance | 180°F / 82°C |
| Moisture Absorption** | Maximum 14% @ 70°F (21°C) and 65% RH |
| Chemical Tolerance*** | Acids→Poor Oxidants→Poor Bases→Fair Solvents→Fair |
| Abrasion Resistance | Good per TAPPI 476 (Taber Method) |

CURRENT AVAILABLE CONFIGURATIONS

| Collector Models | | Filter Area | | Dimensions | | Cellulex | | |
|------------------------------------|--------------------|-----------------|----------------|------------------|-----------------------|----------|----|----|
| | | ft ² | m ² | in | mm | Standard | FR | NL |
| Ambient Air Tubesheets | Coned | 260 | 24.2 | 12.7 x 15.9 x 26 | 322.6 x 403.9 x 660.4 | • | • | • |
| | Cylindrical | 226 | 21.0 | 12.74 x 26 | 323.6 x 660.4 | • | • | • |
| | Downflo Oval (DFO) | 190 | 17.6 | 11.4 x 14.4 x 26 | 289.6 x 365.8 x 660.4 | • | • | • |
| AerBooth | | 226 | 21.0 | 12.74 x 26 | 323.6 x 660.4 | • | • | • |
| AT-3000 | | 212 | 19.7 | 13.84 x 22 | 351.5 x 558.8 | | • | |
| Bin Vent (TBV) | | 226 | 21.0 | 12.74 x 26 | 323.6 x 660.4 | • | • | • |
| CX Series | | 254 | 23.6 | 13.84 x 26 | 351.5 x 660.4 | • | • | |
| Downdraft Bench | | 254 | 23.6 | 13.84 x 26 | 351.5 x 660.4 | • | • | |
| Downflo® (DF) | | 226 | 21.0 | 12.74 x 26 | 323.6 x 660.4 | • | • | • |
| Downflo II (DFT) | | 254 | 23.6 | 13.84 x 26 | 351.5 x 660.4 | • | • | • |
| Downflo (SDF) | | 103 | 9.6 | 9.21 x 22.3 | 233.9 x 566.2 | • | | |
| Environmental Control Booth™ (ECB) | | 226 | 21.0 | 12.74 x 26 | 323.6 x 660.4 | • | • | • |
| MTD | | 226 | 21.0 | 12.74 x 26 | 323.6 x 660.4 | • | • | • |
| ProBooth™ | | 226 | 21.0 | 12.74 x 26 | 323.6 x 660.4 | • | • | • |
| ShopPro™ | | 65 | 6.0 | 16.6 x 10.1 | 421.6 x 256.5 | • | | |
| | | 135 | 12.5 | 16.6 x 20.1 | 421.6 x 510.5 | • | | |
| | | 177 | 16.4 | 16.6 x 26.1 | 421.6 x 662.9 | • | | |
| TD Large | | 226 | 21.0 | 12.74 x 26 | 323.6 x 660.4 | • | • | • |
| TD Small | | 60 | 5.6 | 7.9 x 16 | 200.7 x 406.4 | • | | |

† UL is a registered trademark of Underwriters Laboratories, Inc.

* The Minimum Efficiency Reporting Value (MERV) of this filter cartridge has been determined through independent laboratory testing using ASHRAE 52.2 (2007) test standards. The MERV rating was determined at a face velocity of 118 feet per minute (36.0 meters per minute) and loading up to four inches (101.6 millimeters) water gauge. Actual efficiency of any filter cartridge will vary according to the specific application parameters. Dust concentration, airflow, particle characteristics, and pulse cleaning methods all affect filtration efficiency.

** Environmental conditions involving combinations of high temperature, corrosive material, and moisture can reduce media strength. Reduction in media strength may compromise cartridge integrity and performance.

*** A combination of chemicals may alter fiber resistance to the specified performance level. Chemical attack may compromise cartridge integrity and performance.

Significantly improve the performance of your collector with genuine Donaldson Torit replacement filters and parts. **Call Donaldson Torit at 800-365-1331.**

Important Notice

Many factors beyond the control of Donaldson can affect the use and performance of Donaldson products in a particular application, including the conditions under which the product is used. Since these factors are uniquely within the user's knowledge and control, it is essential the user evaluate the products to determine whether the product is fit for the particular purpose and suitable for the user's application. All products, product specifications, availability and data are subject to change without notice, and may vary by region or country.



Donaldson Company, Inc.
Minneapolis, MN
donaldson.com • shop.donaldson.com

North America
Email: donaldson@donaldson.com
Phone: (USA): +1-800-365-1331 • (MX): +1-800-343-36-39

Australasia
Email: marketing.australia@donaldson.com
Phone: +61-2-4350-2000
Toll Free: (AU) +1800-345-837 • (NZ) +0800-743-387

F118114 ENG (02/20) Cellulex Cartridge ©2011-2020 Donaldson Company, Inc.

Donaldson, Torit, Cellulex, Downflo, ProBooth, ShopPro and the color blue are marks of Donaldson Company, Inc. All other marks belong to their respective owners.

China
Email: info.cn@donaldson.com
Phone: +86-400-820-1038

Donaldson Europe B.V.B.A.
Email: IAF-europe@donaldson.com
Phone: +32-16-38-3811

India
Email: info.difs@donaldson.com
Phone: +91-124-4807-400 • +18001035018

Japan
Email: jp-ndl.ifsweb@donaldson.com
Phone: +81-42-540-4112

Korea
Email: iaf-kr@donaldson.com
Phone: +82-2-517-3333

Latinoamerica
Email: IndustrialAir@donaldson.com
Phone: +52-449-300-2442

South Africa
Email: SAMarketing@donaldson.com
Phone: +27-11-997-6000

Southeast Asia
Email: IAFSEA@donaldson.com
Phone: +65-6311-7373