

- Smooth, hydrophobic, state-of-the-art PTFE membrane provides excellent particle release during pulse cleaning
- MERV* 16 filtration efficiency per ASHRAE 52.2-2007
- Torit-Tex CD and HCD cartridges are conductive.**
- Torit-Tex HCD is for use in higher temperatures up to 275°F/135°C
- Very good chemical tolerance**

APPLICATIONS

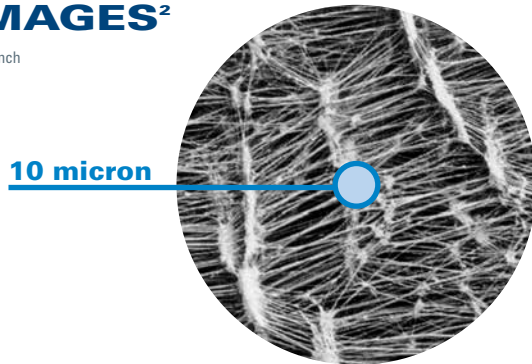
- Highly recommended for chemical, food, and industrial processing when product contamination must be minimized
- Excellent performance in moist, hygroscopic, and agglomerative applications where the use of a PTFE membrane is suggested
- Torit-Tex CD and HCD are recommended for conditions where electrostatic charges can be hazardous



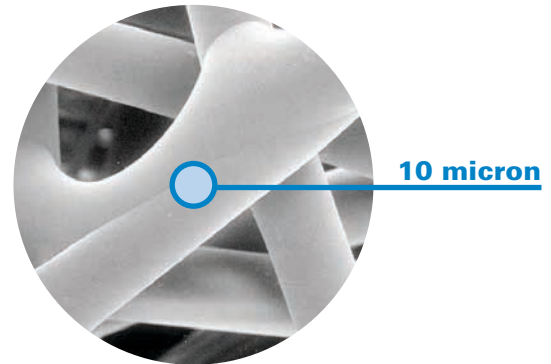
Torit-Tex Cartridge

SEM IMAGES[†]

1 micron = 1/25,400 of an inch
(1/1000 of a millimeter)



Torit-Tex Media (600x)



Spunbond Media (600x)

† Scanning Electron Microscope

* Refer to Minimum Efficiency Reporting Value on page 2.

** Refer to Technical Information on page 2.

SPECIFICATIONS

MEDIA COMPOSITION	
Substrate	PTFE surface membrane with average fiber diameters of 0.2 µm Calendered spunbond polyester substrate with average fiber diameter of 14 µm
Composition of Conductive Media	PTFE surface membrane Carbon impregnated spunbond polyester
CARTRIDGE CONSTRUCTION	
Standard Construction	Galvanized expanded metal liner 60% open area Galvanized metal end caps Standard urethane gasket or special hi-temp gasket Optional stainless steel liner and end caps
Conductivity for Torit-TEX CD & HCD	Resistivity level 10' OHM
Options	Stainless steel liner and end caps EPDM gasket

MEDIA COMPATIBILITY DATA		
Temperature Resistance	STD 200°F CD 93°C	HCD 275°F 135°C
Moisture Absorption**	Maximum 0.5% @ 70°F (21°C) and 65% RH	
Chemical Tolerance***	Acids→Good Bases→Good	Oxidants→Good Solvents→Good
Abrasion Resistance	Good per TAPPI 476 (Taber Method)	

MEDIA EFFICIENCY	
U.S. Efficiency Rating	MERV* 16 per ASHRAE 52.2-2007

CONFIGURATIONS

Models	Filtration Area		Pleat Height		Dimensions		Torit-TEX	Torit-TEX CD	Torit-TEX HCD
	ft²	m²	in	mm	in	mm			
BinVent (TBV)	67.0	6.2	1.5	38.1	12.74 x 26.0	323.6 x 660.4	•	•	
Downdraft Bench	74.0	6.9	1.5	38.1	12.8 x 26.0	326.0 x 660.4	•	•	•
Downflo® (DF)	67.0	6.2	1.5	38.1	11.7 x 26.0	298.0 x 660.4	•	•	
Downflo II (DFT)	74.0	6.9	1.5	38.1	12.8 x 26.0	326.0 x 660.4	•	•	•
Downflo Oval (DFO)	69.0	6.4	1.5	38.1	11.4 x 14.4 x 26.0	288.5 x 364.7 x 660.4	•	•	•
Downflo® Evolution (DFE)	74.0	6.9	1.5	38.1	13.7 x 13.7 x 26.0	349.1 x 349.1 x 660.4	•		
Downflo WorkStation (DWS)	69.0	6.4	1.5	38.1	11.4 x 14.4 x 26.0	288.5 x 364.7 x 660.4	•	•	•
Downflo (SDF)	38.0	3.5	1.5	38.1	9.2 x 22.3	234.0 x 566.2	•	•	
Downflo Containment System (DCS)	69.0	6.4	1.5	38.1	11.4 x 14.4 x 26.0	288.5 x 364.7 x 660.4	•	•	•
Environmental Control Booth (ECB)	67.0	6.2	1.5	38.1	12.74 x 26.0	323.6 x 660.4	•		
MTD	67.0	6.2	1.5	38.1	12.74 x 26.0	323.6 x 660.4	•	•	
TD Large	67.0	6.2	1.5	38.1	12.74 x 26.0	323.6 x 660.4	•	•	
TD Small	25.0	2.3	1.1	27.9	7.9 x 16.0	201.4 x 406.4	•	•	

* The Minimum Efficiency Reporting Value (MERV) of this filter cartridge has been determined through independent laboratory testing using ASHRAE 52.2 (2007) test standards. The MERV rating was determined at a face velocity of 118 feet per minute (36.0 meters per minute) and loading up to four inches (101.6 millimeters) water gauge. Actual efficiency of any filter cartridge will vary according to the specific application parameters. Dust concentration, airflow, particle characteristics, and pulse cleaning methods all affect filtration efficiency.

** Environmental conditions involving combinations of high temperature, corrosive material, and moisture can reduce media strength. Reduction in media strength may compromise cartridge integrity and performance.

*** A combination of chemicals may alter fiber resistance to the specified performance level. Chemical attack may compromise cartridge integrity and performance.

Significantly improve the performance of your collector with genuine Donaldson Torit replacement filters and parts. **Call Donaldson Torit at 800-365-1331.**

Important Notice

Many factors beyond the control of Donaldson can affect the use and performance of Donaldson products in a particular application, including the conditions under which the product is used. Since these factors are uniquely within the user's knowledge and control, it is essential the user evaluate the products to determine whether the product is fit for the particular purpose and suitable for the user's application. All products, product specifications, availability and data are subject to change without notice, and may vary by region or country.



Donaldson Company, Inc.
Minneapolis, MN
donaldson.com • shop.donaldson.com

North America
Email: donaldson@donaldson.com
Phone: (USA): +1-800-365-1331 • (MX): +1-800-343-36-39

Australasia
Email: marketing.australia@donaldson.com
Phone: +61-2-4350-2000
Toll Free: (AU) +1800-345-837 • (NZ) +0800-743-387

F118120 ENG (02/20) Torit-TEX Cartridge ©2011-2020 Donaldson Company, Inc.
Donaldson, Torit, Torit-TEX, Downflo and the color blue are marks of Donaldson Company, Inc. All other marks belong to their respective owners.

China
Email: info.cn@donaldson.com
Phone: +86-400-820-1038

Donaldson Europe B.V.B.A.
Email: IAF-europe@donaldson.com
Phone: +32-16-38-3811

India
Email: info.difs@donaldson.com
Phone: +91-124-4807-400 • +18001035018

Japan
Email: jp-ndli.ifsw@donaldson.com
Phone: +81-42-540-4112

Korea
Email: iaf-kr@donaldson.com
Phone: +82-2-517-3333

Latinoamerica
Email: IndustrialAir@donaldson.com
Phone: +52-449-300-2442

South Africa
Email: SAMarketing@donaldson.com
Phone: +27-11-997-6000

Southeast Asia
Email: IAFSEA@donaldson.com
Phone: +65-6311-7373